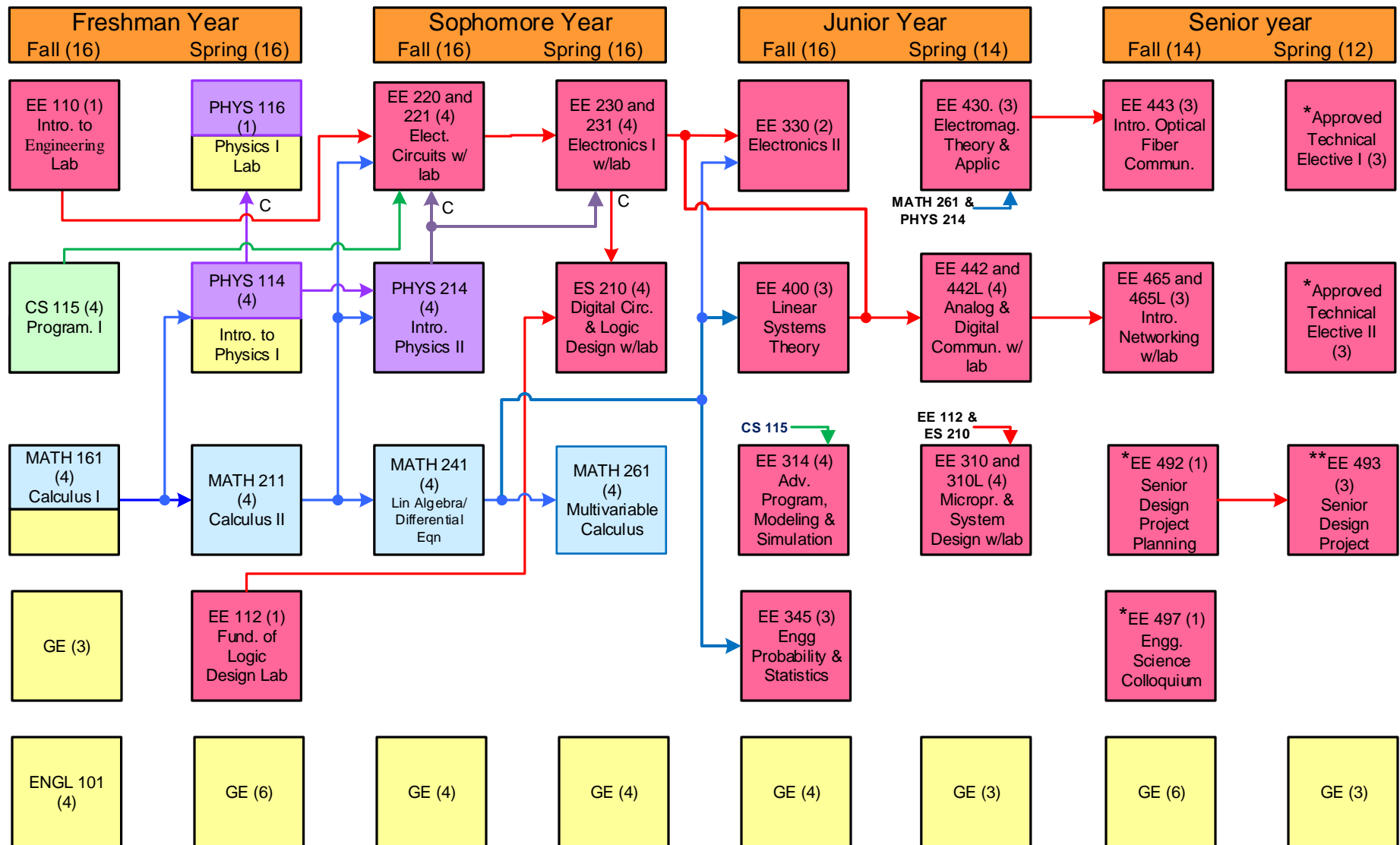


Roadmap to the Four-Year BSEE Program (effective Fall '15)



*: Indicates prerequisite for this course is senior standing in major (completion of all 300-level courses)

** : With permission only

Arrow: Indicates prerequisite Arrow with C: Indicates Co-requisite

Numbers in parentheses indicate semester units

Students must complete each EE course with a grade of C (2.0) or higher and each supporting course with a grade of C- (1.7) or higher in order to pass. Otherwise, the course has to be re-taken.

Recommended GE Curriculum for the BSEE Majors

Effective Fall 2015

Area	Subjects	Suggested GE Courses		
		Courses	Actual units	GE Units
A. Communication and Critical Thinking (8)				
A.2.	Fund. of Communication	ENGL 101	4	4
A.3.	Critical Thinking	ES 210	4	4
B. Natural Sciences and Mathematics (12)				
B.1.	Physical Sciences	PHYS 114 and PHYS 116	4+1	5
B.2.	Biological Sciences	ANTH 201 or BIOL 115	3	3
B.4.	Mathematical Concepts & Quantitative Reasoning	MATH 161	4	4
C. The Arts and Humanities (12)				
C.1.	Fine Arts, Theatre, Dance and Music and Film	Select from the GE C.1 list in the SSU Catalog	4	4
C.2.	Literature, Philosophies, Values	Select from the GE C.2 list in the SSU Catalog	4	4
C.3.	Comparative Perspectives And /Or Foreign	Select from the GE C.3 list in the SSU Catalog	4	4
D. Social Sciences (15)				
D.1.	Individual and Society	Select from the GE D.1 list in the SSU Catalog	3	3
D.2.	World History and Civilization	Select from the GE D.2 list in the SSU Catalog	3	3
D.3.	United States History	Select from the GE D.3 list in the SSU Catalog	3	3
D.4.	US Constitution and CA State and Local Govt.	POLS 200	3	3
D.5.	Contemporary International Perspectives	Select from the GE D.5 list in the SSU Catalog	3	3
E. The Integrated Person (3)				
E.	The Integrated Person	Select SCI 220	3	3