

# SSU Emergency Response App

## Instructions

To ensure easy access to the web-based application, please follow these instructions. If you have any questions about the instructions, please email [emergency@sonoma.edu](mailto:emergency@sonoma.edu).

Jump to: [Apple Mobile Devices](#)

[Android](#)

[Mobile Devices](#)

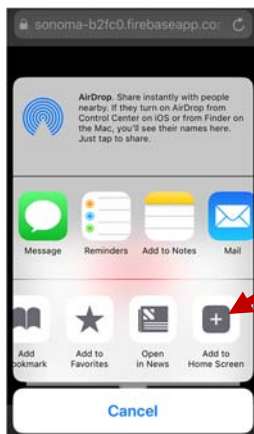
[Desktop](#)

### Apple Mobile Devices

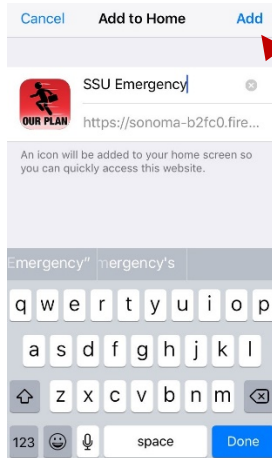
1. Visit <https://sonoma-b2fc0.firebaseio.com/> from an internet browser (Safari preferred)
2. On the next screen, click on the icon indicated in the instructions.



3. On the next screen, scroll the bottom bar to the right until you see "Add to Home Screen."



- The next screen will ask you to name the tile on your phone. We suggest "SSU Emergency."



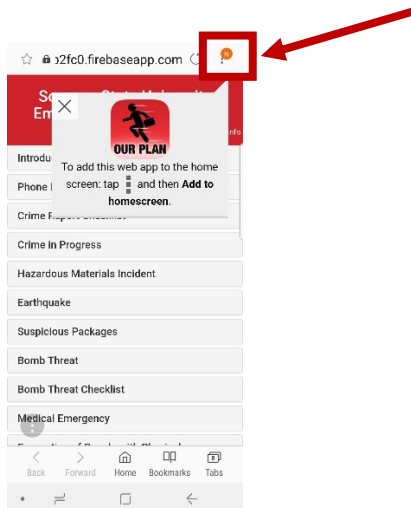
- Once you have entered the name you prefer, click Add.
- The app is now accessible on your phone with the following icon.



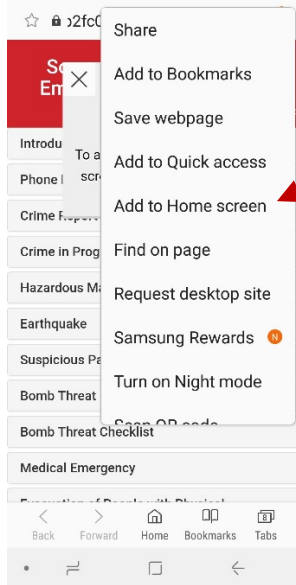
---

## Android Mobile Devices

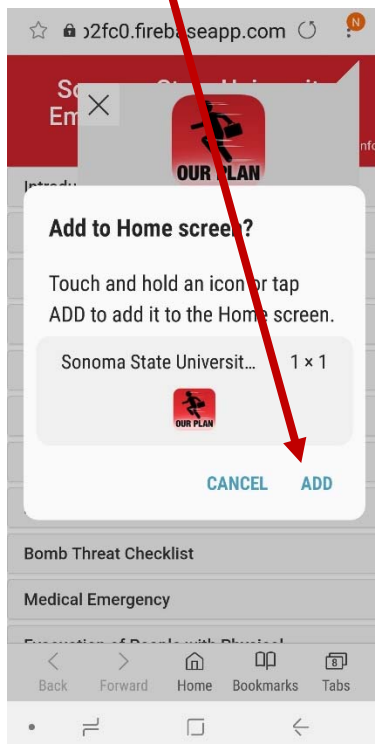
- Visit <https://sonoma-b2fc0.firebaseio.com/> from an internet browser.
- On the next screen, click on the icon indicated in the instructions.



3. On the next screen, scroll the bottom bar to the right until you see "Add to Home Screen."



4. The next screen will ask you to confirm that you would like to add the site to your home screen. Select Add.



5. The app is now accessible on your phone with the following icon.

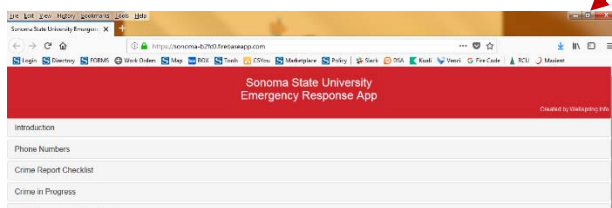


---

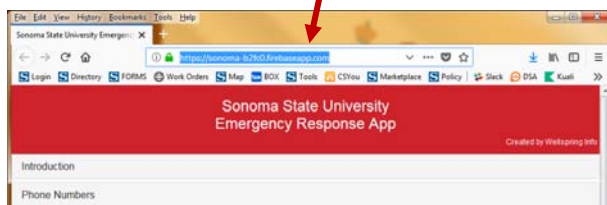
## Computer Desktop

We are working on having the application available on all University computer desktops. In the meantime, follow these instructions to have access to the application on your desktop.

1. Visit <https://sonoma-b2fc0.firebaseio.com/> from an internet browser.
- 2.
3. Minimize the window by clicking on the Minimize icon.



4. Highlight the web address.



5. Drag and drop the web address onto your desktop.